

RANGER



Wildtrak

The awesome Ranger Wildtrak puts an exciting sports edge to a legendary workhorse truck.



Ranger Wildtrak shown in Winning Blue.

Want a truck that is also loaded up with the kind of features that let you enjoy life 'after work'? Or maybe you're after a sportier looking truck that's rugged enough to handle a hard day's work. Either way, there's one simple answer. Wildtrak. As its name suggests, the Ford Ranger Wildtrak adds a real sporting edge to some established tough truck credentials and gives you what you need to tackle the wilder side of life.

Legendary versatility

The Ranger was designed for more than just hard work. You'll discover that when the day is over 'play time' begins and a whole world of possibilities opens up.



Ranger 4x4 XLT Crew Cab Pick-up shown in Titanium Grey.

Gone are the days when a truck was all work and no play. You'll quickly find one of the Ranger's best features is its versatility, because regardless of whether you're loading up the dirt bikes or packing up the family and the camping gear to enjoy the great outdoors for the weekend, Ranger has what it takes to tackle the big weekend with as much gusto as a hard day's work.

Genuine 4x4 credentials

The Ranger lets you get on with the job at hand no matter how tough the terrain gets.



Ranger 4x4 XLT Super Cab Pick-up shown in Silver Metallic.



4x4 shift on the fly.*

Shift from two wheel to four wheel drive at a flick of the wrist.

*With optional automatic transmission on selected models.

It's always good to know the moment things get rough underfoot you're not compromised by your vehicle's off-road capabilities. It's the reason why Ranger, with its high and low range gearbox, limited slip differential and shift on the fly capabilities, packs genuine 4x4 credentials. With durable suspension designed specifically for Australian conditions, the Ford Ranger won't let you down.

Tough to beat

Ranger is one business tool that can handle just about anything the worksite dishes up.



Ranger 4x4 XL Crew Cab shown in Red.

While its bold lines, sure footed stance and host of stand-out exterior features tell you Ranger means business, its car-like interior means your clients or workmates travel in genuine comfort. Under the hood the hard working truck credentials are equally impressive. Without compromising on power, Ranger's turbo diesel engines help drive down your fuel costs and that's always good for business.



Duratorq common rail TDCi turbo diesel engine.

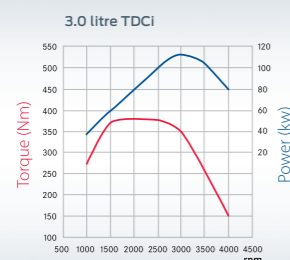
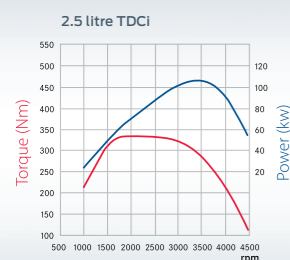
The Ford Duratorq engine provides a perfect combination of power, torque and fuel economy to offer superb performance and a car-like drive. The common-rail direct injection diesel engine with variable geometry turbocharger produces high levels of torque throughout the rev range, but is still outstandingly quiet for a great driving experience and a smooth and powerful ride.

Play time

Ranger delivers all the power you need to make the most of every minute away from work.



Ranger 4x4 XLT Crew Cab Pick-up shown in Black Mica.



2.5 litre TDCi

Maximum power: 105kW @ 3500 rpm
Maximum torque: 330Nm @ 1800 rpm

3.0 litre TDCi

Maximum power: 115kW @ 3200 rpm
Maximum torque: 380Nm @ 1800 rpm

There's no questioning it, Ranger was built for hard work, but when it comes time for some R&R, like hooking up the boat for a fishing trip, it's nice to know that Ranger's up to the job. Leading the way is the 3.0L high pressure common rail turbo diesel. It delivers 115kW of power at 3200rpm and a whopping 380Nm of torque at only 1800rpm, while fuel economy comes in at 9.5L/100km*.

*Figures obtained from controlled tests of 3.0L Manual model using ADR 81/02 (combined). Actual fuel consumption will depend on many factors including driving habits, prevailing conditions and your vehicle's equipment, condition and use.

A reliable workforce

Regardless of how hard the task at hand is, Ranger is the trusted worker that every business can rely on.



From left to right: Ranger 4x2 XL Single Cab Chassis shown in Cool White with optional aluminium tray, Ranger 4x2 XLT Crew Cab Pick-up Hi-Rider shown in Titanium Grey, Ranger 4x4 XL Super Cab Pick-up shown in Red.



Thanks to a hefty payload that exceeds one tonne right across the range, massive loads are no problem.



Genuine Ford towpack makes towing a breeze, whether it's for work or a weekend trip.

With payloads of up to 1383kg*, a 2.25 tonne towing capacity# on 2.5L models and a huge 3 tonne towing capacity^ on 3.0L manuals, Ranger will move just about anything. The high pressure common rail diesel platform gives you excellent fuel economy, and direct injection technology means loads of torque and powerful acceleration throughout the rev range, under all manner of load and towing conditions.

*XL Single Cab Chassis models only. #Braked towing capacity available on 2.5L manual or automatic models fitted with a Genuine Ford heavy duty towpack and load levelling kit. Subject to State and Territory regulations. ^Braked towing capacity available on 3.0L manual model when fitted with a Genuine Ford heavy duty towpack and load levelling kit. Subject to State and Territory regulations.

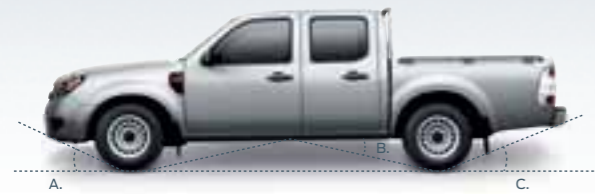
Ranger Hi-Rider

When the terrain gets a whole lot tougher you can depend on the Ranger Hi-Rider to get the job done.



Ranger 4x2 XLT Crew Cab Pick-up Hi-Rider shown in Highland Green.

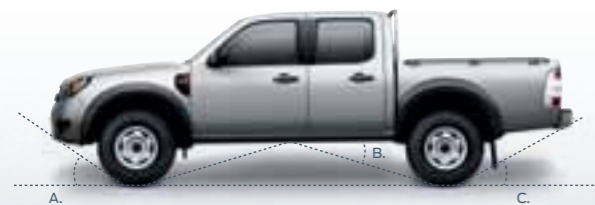
XL Crew Cab Pick-up



With additional ground clearance as well as increased approach and departure angles, the Ranger Hi-Rider model handles tough terrain with ease.

	XL Crew Cab Pick-up	XL Crew Cab Pick-up Hi-Rider
A. Approach angle (degrees)	24	34
B. Ramp breakover angle (degrees)	21	28
C. Departure angle (degrees)*	19	26
Ground Clearance (mm)	181	207

XL Crew Cab Pick-up Hi-Rider



*Departure angle is measured at tailpipe for Cab Chassis and at rear bumper for Pick-up.

Leave the bitumen at a worksite or decide to make an unscheduled detour off the beaten track and you could find yourself in trouble negotiating the terrain when it becomes more challenging. If you need extra ground clearance but don't want the extra cost of a 4X4, you can't go past the 4x2 Ranger Hi-Rider. You'll still enjoy all the hard working truck benefits that Ranger is renowned for, as well as being able to take all manner of rugged terrain in your stride.

A very business-like interior

There's no place like the interior of the Ranger to make work as comfortable as possible.



Super Cab models.

The Super Cab Rear Access System, which features 2 rear hinged doors, provides easy access to the rear compartment for passengers as well as a safe storage area for valuable items such as tool boxes.



Ranger 4x4 XLT Crew Cab Pick-up interior shown.

It starts the moment you get behind the wheel with ergonomic seating, clever instrument panel, short throw gearshift and a host of convenient and clever storage solutions. To keep business moving when you're on the move, Ranger can also double as an office with its two 12-volt DC accessory sockets that enable you to charge your mobile phone* and run your lap top computer.*

*Requires connection cable, sold separately.



Cruise Control.

The easy to reach controls provide greater convenience and improved safety.*

Car-like interior

The impressive list of car-like features means that in a Ranger getting to and from work has never been so comfortable.



Convenient storage.

Ranger provides a host of convenient storage options.

Keyless entry.

The safety and security of keyless entry with central locking and engine immobiliser is standard across the range.

Storage tray.

A convenient slide-out tray that can support a hefty 10kg.

Power window control switches.

Power windows and mirrors on every Ranger.

Ranger 4x4 XLT Crew Cab Pick-up with optional automatic transmission shown.



Slide behind the wheel and you quickly realise, Ranger is no ordinary truck. Ranger's spacious cabin looks and feels just like a family sedan, and the ride is just as comfortable. Power windows and side mirrors, central locking, engine immobiliser and remote keyless entry are standard across the range. Add to this an entertainment system with MP3 compatibility and 6 Disc CD Player on Wildtrak and XLT models and you have a package that's tough to beat.

*Standard on XLT and Wildtrak only. Available as an accessory on XL.

Amongst the safest in its class

Whether it happens to be work or play, you can rest assured that Ranger is looking after you and your passengers.

1 Safety Cell.

Ranger's safety cell construction will help to protect you in the event of an accident. With a body structure that satisfies stringent European collision-safety standards, tough side impact beams and on Super Cab models, a front door and rear access panel that close to form a virtual B-pillar, Ranger is designed to disperse crash forces away from the vehicle's occupants.

2 Driver and front passenger airbags.

Standard on all Rangers are driver and front passenger airbags that activate in milliseconds to protect you in a frontal collision. What's more, front side head/thorax airbags are standard on XLT and Wildtrak models and are available as part of the optional Safety Pack on XL Super and Crew Cab models.

3 Keyless entry.

Remote keyless entry with 2 key fobs and central locking is standard on all Ranger models, providing security, convenience and peace of mind.

4 Engine immobiliser.

Standard on all models, the electronic engine immobiliser provides high security protection for your Ranger. In addition, an anti-theft alarm system is standard on XLT and Wildtrak models providing extra security for your Ranger.

5 Anti-lock Braking System.*

Anti-lock Braking System (ABS) prevents wheel lockup during hard braking, even on slippery surfaces, aiding the driver's ability to steer away from hazards. Electronic Brakeforce Distribution (EBD) optimises the distribution of braking force to the front and rear wheels helping to provide safe, effective braking and shorter stopping distances.



Ranger 4x4 XLT Super Cab Pick-up shown in Silver Metallic.

Ranger's high levels of safety start with a superior body construction that is designed to disperse crash forces away from the vehicle's occupants. Driver and front passenger airbags are standard across the range while front side head/thorax airbags are standard on XLT and Wildtrak models. And, with four wheel ABS with Electronic Brakeforce Distribution (EBD)* and load-sensing seatbelt pretensioners, you can rest assured Ranger doesn't compromise when it comes to safety.

*Standard on XLT and Wildtrak. Optional on XL Single Cab models and available as part of optional Safety Pack on XL Super and Crew Cab models.

The Ranger range

Working hard, playing hard, or both, the extensive and versatile selection of models means there's a Ranger that's just right for your needs.



4x2 Models



XL Single Cab Chassis



XL Single Cab Chassis Hi-Rider



XL Single Cab Pick-up



XL Super Cab Chassis Hi-Rider



XL Super Cab Pick-up Hi-Rider



XL Crew Cab Chassis Hi-Rider



XL Crew Cab Pick-up



XL Crew Cab Pick-up Hi-Rider



XLT Crew Cab Pick-up Hi-Rider

4x4 Models



XL Single Cab Chassis



XL Super Cab Chassis



XL Super Cab Pick-up



XL Crew Cab Chassis



XL Crew Cab Pick-up



XLT Super Cab Pick-up



XLT Crew Cab Pick-up



Wildtrak Crew Cab Pick-up

Ranger really spoils you for choice. There are 17 models available and leading the way is the Wildtrak. On the outside Wildtrak boasts some serious style with 18" alloy wheels, unique sports bar and box rails, roof rails and a roller shutter*. On the inside you'll find a truly luxurious Alcantara/leather package with a multi-meter that displays inside/outside temperature, angle of vehicle tilt and a compass.

*Roller shutter is offered as a no cost option on Wildtrak.



Exterior colour availability

Model	XL	XLT	Wildtrak
Standard paints			
Cool White	●	●	●
Red	●	●	–
Prestige paints			
Desert Bronze	●	●	–
Black Mica	●	●	●
Silver Metallic	●	●	●
Titanium Grey	●	●	–
Winning Blue	●	●	●
Highland Green	●	●	–

Exterior paint / seat trim colour combinations

Model	XL	XLT	Wildtrak
Exterior paint/Seat trim	Dark Grey Cloth	Sports Weave	Alcantara/leather
Insert/Bolster	Network/ Crosswise	Cascade/ Rockpool	Alcantara/ Leather
Cool White	●	●	●
Red	●	●	–
Desert Bronze	●	●	–
Black Mica	●	●	●
Silver Metallic	●	●	●
Titanium Grey	●	●	–
Winning Blue	●	●	●
Highland Green	●	●	–

● = Available



Cool White



Desert Bronze



Red



Silver Metallic



Titanium Grey

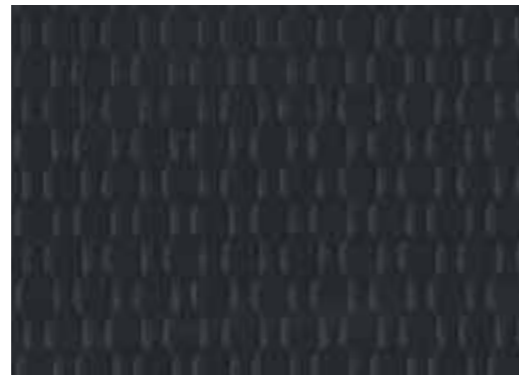


Highland Green

Network/Crosswise



Cascade/Rockpool



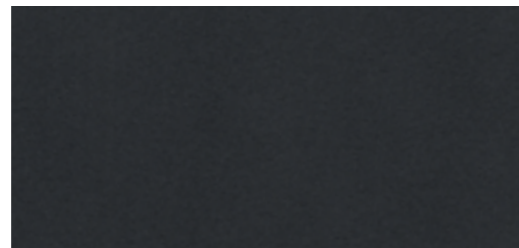
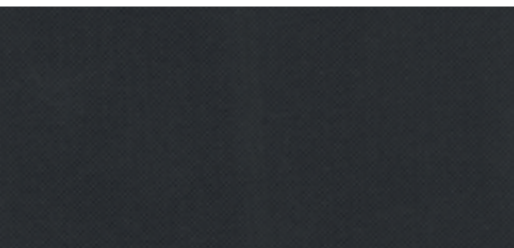
Alcantara/Leather



Winning Blue



Black Mica



Personalise your Ranger. The choice is yours.

The Ford Vehicle Personalisation accessory range lets you personalise your Ranger to perfectly suit your needs.



Heavy duty rubber floor mats. Designed with a raised outer lip to help retain dirt and sand, these heavy duty floor mats will help protect your vehicle's interior.



Towpack. Genuine Ford towpack makes towing a breeze, whether it's for work or a weekend trip.



Snorkel. Moulded from high quality UV resistant polyethylene, this snorkel provides cooler and cleaner air to the engine, especially in dusty conditions, and a higher air intake position to assist with water crossings. Available on 3.0L models only.



EGR 3-piece Hard Tonneau. Helps to keep your valuable equipment and tools secure. Lightweight and impact resistant, manufactured in rugged and durable PC/ABS material. Features a single point push button system for easy locking.



Sports bar. Made from strong, polished stainless steel, the sports bar will enhance the look of your Ranger.
Soft tonneau. Helps protect equipment and valuables from rain and dust. Features elasticised bungee looping and includes a steel tonneau bow to assist with water run-off.



Bull bar. Developed specifically for the Ford Ranger, this bull bar is designed to fully integrate with the vehicle's airbag system and is available on 3.0L models to help protect the front end of your vehicle in the case of an accident.



Scuff plates. Enhance your vehicle's appearance and help protect the doorstep from scratches and scuffs. Made from stainless steel.



Bedliner. Helps to protect rear cargo area and minimise movement of gear during transit. Optional 12V auxiliary power socket located in the Pick-up box area allows you to run compatible fridges and other equipment.



Cruise Control. Whether it's the freeway or the highway, the freedom of the open road is more enjoyable with the addition of cruise control.

* 1. Available only when vehicle is fitted with Genuine Ford bedliner (sold separately). 2. Wheels and tyres sold separately. 3. This accessory is a Supplier Branded Accessory and is not manufactured or warranted by Ford. The warranty is provided by the supplier. 4. It is recommended that tyres matching original equipment specification be fitted to Mullins wheels. 5. Available on Super and Crew Cab Pick-up Hi-Rider models only. 6. Available on Super and Crew Cab models only. 7. Available on Super and Crew Cab models only. 8. Available on Super and Crew Cab models only. 9. Subject to State and Territory regulations. Genuine Ford towpacks include towbar, towball, and trailer wiring. 10. 3,000kg maximum towing capacity available on 3.0L manual models only. Towing capacity 2,500kg on 3.0L XL, XLT and Super models. Bluetooth is a registered trademark of Bluetooth SIG Inc., and is used under licence.

Options and accessories*

	XL	XLT	Wildtrak
Exterior styling			
Sports bar with high mounted stop light ^{1, 6}	A	S	–
16" Alloy wheels ²	A	A	–
Mullins B-LOC 15" alloy wheels ^{2, 3, 4}	A	A	A
Mullins B-LOC 16" alloy wheels ^{2, 3, 4}	A	A	A
Mullins Magnum 15" alloy wheels ^{2, 3, 4}	A	A	A
Mullins Magnum 16" alloy wheels ^{2, 3, 4}	A	A	A
Mullins Stampede Anthracite 15" alloy wheels ^{2, 3, 4}	A	A	A
Mullins Stampede Anthracite 16" alloy wheels ^{2, 3, 4}	A	A	A
Mullins Stampede Silver 15" alloy wheels ^{2, 3, 4}	A	A	A
Mullins Stampede Silver 16" alloy wheels ^{2, 3, 4}	A	A	A
Mullins SUBB RV 16" alloy wheels ^{2, 3, 4}	A	A	A
Mullins SUBB RV Chrome 16" alloy wheels ^{2, 3, 4}	A	A	A
Exterior protection			
Side steps ³	A	S	S
Bonnet protector	A	A	A
Soft tonneau cover ⁶	A	A	–
EGR 1-piece hard tonneau cover ^{3, 7}	A	–	–
EGR 3-piece hard tonneau cover (for sports bar) ^{3, 7}	–	A	–
Spare wheel lock	A	A	–
Weathershields ⁸	A	A	A
Towing and carrying			
Bedliner	A	S	S
Towpack - standard 1,800kg ⁹	A	A	A
Towpack - heavy duty 2,250kg (including load levelling kit) ⁹	A	A	A
Towpack - heavy duty 3,000kg (including load levelling kit) ^{9, 10}	A	A	A
Interior styling			
Scuff plate inserts ¹¹	A	A	S
Centre console lid - leather	A	A	A
Interior comforts and storage			
Carpet mats ¹¹	A	A	S
Rubber floor mats	A	A	A
Heavy duty rubber mats ¹¹	A	A	A
In car electrical and entertainment			
Bluetooth® phone kit ¹²	A	A	A
Auxiliary power socket (for bedliner) 12V ¹	A	S	S
Cruise Control	A	S	S

A = Offered as an accessory. S = Feature standard on this model.
– = Feature not available on this model.

*Refer to previous page for disclaimers relating to the Options and accessories table.

Mechanical specifications

Engine	2.5L TDCi (Turbo diesel)	3.0I TDCi (turbo diesel)		
Engine type	4 Cyl DOHC	4 Cyl DOHC		
Engine size (cc)	2499	2953		
Compression ratio	18.0:1	18.0:1		
Maximum power (EEC)	105kW @ 3500rpm	115kW @ 3200rpm		
Maximum torque (EEC)	330Nm @ 1800rpm	380Nm @ 1800rpm		
No. of valves	16	16		
Bore x stroke	93 x 92mm	96 x 102mm		
Fuel management system	Advanced high pressure common-rail direct-injection fuel management system			
Transmission ratios	5-speed manual	5-speed auto	5-speed manual	5-speed auto
1 st	4.294	3.220	4.294	3.220
2 nd	2.413	2.290	2.413	2.290
3 rd	1.491	1.550	1.491	1.550
4 th	1.000	1.000	1.000	1.000
5 th	0.800	0.710	0.800	0.710
Reverse	3.391	3.070	3.391	3.070
4x4 transfer case ratios	–	–	Low: 2.020	Low: 2.480
	–	–	High: 1.000	High: 1.000
Differential				
Final drive ratio	3.416:1		3.727:1	
Fuel				
Fuel tank capacity (L)	63		70	
Fuel consumption (L/100km) ¹	8.5	9.9	9.5	10.2
CO ₂ emissions (grams/km) ¹	225	263	251	271
Electrical/clutch				
Battery (type)	95D31R		95D31R	
Alternator	12V - 70 Amp		12V - 70 Amp	
Clutch type (manual transmission only)	Hydraulic, single dry plate with diaphragm spring		Hydraulic, single dry plate with diaphragm spring	
Clutch dimensions (manual transmission only)	250 x 155mm		250 x 155mm	
Towing capacity				
Braked ^{2, 4}	2250kg		3000kg 2500kg	
Unbraked ^{3, 4}	750kg		750kg 750kg	

1. Figures obtained from controlled tests using ADR 81/02 (combined). Actual fuel consumption and emissions will depend on many factors including driving habits, prevailing conditions and your vehicle's equipment, condition and use. 2. When fitted with a Genuine Ford heavy duty towpack and load levelling kit. Subject to State and Territory regulations. 3. When fitted with a Genuine Ford towpack. Subject to State and Territory regulations. 4. The weight of the vehicle must not exceed the Gross Vehicle Mass (GVM). The combined weight of the fully loaded vehicle and trailer must not exceed the Gross Combination Mass (GCM). Maximum individual axle loads must not be exceeded. Towball download must not exceed 10% of the towed weight. Towball download must not exceed 250kg.

Specifications and options 4x2

	Single XL C/C	Single XL C/C HR	Single XL P/U	Super XL C/C HR	Super XL P/U HR	Crew XL C/C HR	Crew XL P/U	Crew XL P/U HR	Crew XL P/U HR
Mechanical									
2.5L TDCi 5-speed manual transmission	S	-	S	-	-	-	-	-	-
2.5L TDCi 5-speed automatic transmission	-	-	-	O	-	-	S	-	-
3.0L TDCi 5-speed manual transmission	-	S	-	S	S	-	-	S	-
3.0L TDCi 5-speed automatic transmission	-	-	-	-	-	S	-	-	O
Vehicle masses (kg)									
	Bench seat	Bucket seat							
Gross Vehicle Mass ⁶	2870	2790	2842	2790	2810	2917	2917	2914	2853
Kerb mass (maximum)	1487	1489	1535	1627	1641	1626	1745	1685	1739
Payload (maximum) ⁷	1383	1301	1307	1163	1169	1291	1172	1229	1114
Front axle load (maximum)	1170	1170	1430	1170	1170	1430	1430	1430	1170
Rear axle load (maximum)	1860	1860	1850	1860	1860	1850	1850	1850	1860
Gross Combination Mass ⁸	5100	5100	5500	5100	5100	5500	5500	4875	5100
Exterior dimensions (mm)⁹									
Overall length	4848	4848	5173	4848	5173	4848	5173	5173	5179
Overall width ¹⁰	1715	1788	1715	1788	1788	1788	1715	1788	1788
Overall height	1622	1743	1622	1743	1743	1755	1630	1755	1762
Wheelbase	2985	3000	2985	3000	3000	3000	2985	3000	3000
Front track	1445	1445	1445	1445	1445	1445	1445	1445	1475
Rear track	1450	1440	1450	1440	1440	1440	1440	1450	1470
Front overhang	888	888	888	888	888	888	888	888	888
Rear overhang	-	-	1300	-	1285	-	1300	1285	1291
Ground clearance	181	207	181	207	207	207	181	207	214
Wading depth	400	750	400	750	750	750	400	750	750
Approach angle (degrees)	24	34	24	34	34	34	24	34	34
Departure angle (degrees) ¹¹	23	33	19	33	26	33	19	26	15
Ramp breakover angle (degrees)	21	28	21	28	28	28	21	28	28
Interior dimensions (mm)									
Front headroom	1012	1012	1012	1012	1012	1012	1012	1012	1012
Rear headroom	-	-	-	937	937	963	963	963	963
Front legroom (maximum)	1049	1049	1049	1068	1068	1068	1068	1068	1068
Rear legroom (minimum)	-	-	-	789	789	831	831	831	831
Front shoulder room	1405	1405	1405	1405	1405	1405	1405	1405	1405
Rear shoulder room	-	-	-	1405	1405	1409	1409	1409	1409
Pick-up box dimensions (mm)									
Load length - at floor	2280	2280	2280	1753	1753	1530	1530	1530	1530
Load width - at floor	1456	1456	1456	1456	1456	1456	1456	1456	1456
Load width - at top	1459	1459	1459	1459	1459	1459	1459	1459	1459
Load width - between wheelhouses	1090	1090	1090	1090	1090	1090	1090	1090	1090
Load height - at floor	465	465	465	465	465	465	465	465	465
Width of rear opening	1328	1328	1328	1328	1328	1328	1328	1328	1328
Ride and handling									
Fully independent double wishbone front suspension	S	S	S	S	S	S	S	S	S
Dual rate semi-elliptic leaf spring rear suspension	S	S	S	S	S	S	S	S	S
Front ventilated disc brakes	S	S	S	S	S	S	S	S	S
Power steering (RPM sensitive)	S	S	S	S	S	S	S	S	S
Turning circle - kerb-to-kerb (m)	12.0	12.6	12.0	12.6	12.6	12.6	12.0	12.6	12.6
15" x 6.5" steel wheel with 215/70R15 tyres ¹²	S	-	S	-	-	-	S	-	-
15" x 6.5" styled steel wheel with 235/75R15 tyres ¹³	-	S	-	S	S	S	-	S	-
16" x 7.0" alloy wheel with 245/70R16 tyres ¹³	-	-	-	-	-	-	-	-	S
Limited Slip Differential (LSD)	-	S	-	S	S	S	-	S	S

HR = High Rider. C/C = Cab Chassis. P/U = Pick-up.

5. Air conditioning is mandatory with optional bucket seats and/or optional automatic transmission (where available). 6. Gross Vehicle Mass (GVM) is defined as the sum of the kerb mass and the payload. 7. Payload is defined as the maximum combined value of occupants/cargo/added options/added structures/towball download (when towing). 8. Includes braked trailer. 9. Cab Chassis dimensions with optional factory fitted tray (where available). 10. Excludes exterior side mirrors.

	Single XL C/C	Single XL C/C HR	Single XL P/U	Super XL C/C HR	Super XL P/U HR	Crew XL C/C HR	Crew XL P/U	Crew XL P/U HR	Crew XLT P/U HR
Exterior									
Body colour rear step bumper	–	–	S	–	S	–	S	S	–
Stainless steel rear step bumper	–	–	–	–	–	–	–	–	S
Painted wheel arch flares with integrated mud flaps	–	–	–	–	–	–	–	–	S
Black moulded wheel arch flares with integrated mud flaps	–	S ¹⁴	–	S ¹⁴	S	S ¹⁴	–	S	–
Mud flaps	S ¹⁴	–	S	–	–	–	S	–	–
4-door Dual Rear Access System	–	–	–	S	S	–	–	–	–
Front fog lamps	–	–	–	–	–	–	–	–	S
Power exterior mirrors	S	S	S	S	S	S	S	S	S
Chrome exterior mirrors, door & tailgate handles	–	–	–	–	–	–	–	–	S
Aluminium side steps	–	–	–	–	–	–	–	–	S
Chrome sports bar with high mounted stop lamp	–	–	–	–	A	–	A	A	S
Bedliner with 12 volt power socket	–	–	–	–	A ¹⁵	–	A ¹⁵	A ¹⁵	S
External rope rail	–	–	S	–	S	–	S	S	–
Inner rope hooks	–	–	–	–	–	–	–	–	S
Aluminium tray	O	O	–	O	–	–	–	–	–
Safety and security									
Driver and front passenger airbags	S	S	S	S	S	S	S	S	S
4-wheel Anti-lock Braking System (ABS) with Electronic Brakeforce Distribution (EBD)	O	O	O	–	–	S	–	–	S
Safety pack featuring 4-wheel ABS with EBD, front side head/thorax airbags and sports weave trim	–	–	–	O	O	–	O	O	–
Front side head/thorax airbags	–	–	–	–	–	S	–	–	S
Anti-theft alarm system	–	–	–	–	–	–	–	–	S
Engine immobiliser & central locking	S	S	S	S	S	S	S	S	S
Remote fuel lid opener	–	–	S	–	S	–	S	S	S
Remote keyless entry with 2 key fobs	S	S	S	S	S	S	S	S	S
Interior									
Cruise Control	A	A	A	A	A	A	A	A	S
Tilt adjustable steering column	S	S	S	S	S	S	S	S	S
Air-conditioning	NCO ⁵ /A	S	S	S	S	S	S	S	S
Leather steering wheel and gear knobs ¹⁶	–	–	–	–	–	–	–	–	S
Power windows ¹⁷	S	S	S	S ¹⁷	S ¹⁷	S	S	S	S
Inner chrome door handles	–	–	–	–	–	–	–	–	S
Fan boosted ventilation/heater/demister	S	S	S	S	S	S	S	S	S
Heated rear window	–	–	–	S	S	S	S	S	S
Interior storage									
Passenger side sliding lunch tray	S	S	S	S	S	S	S	S	S
Double lid centre console with arm rest	–	–	–	S	S	S	S	S	S
Under floor storage in rear compartment	–	–	–	S	S	–	–	–	–
Seating and trims									
Dark Grey Cloth trim	S	S	S	S	S	–	S	S	–
Sports Weave trim	–	–	–	O ¹⁸	O ¹⁸	S	O ¹⁸	O ¹⁸	S
Front bench seat	S	–	–	–	–	–	–	–	–
Front bucket seats	O ⁵	S	S	S	S	S	S	S	S
Rear jump seats	–	–	–	S	S	–	–	–	–
Rear bench seat with head rests	–	–	–	–	–	S	S	S	S
Vinyl floor covering	S	S	S	–	–	–	–	–	–
Cloth floor covering	–	–	–	S	S	S	S	S	S
Audio & communication									
iPod/MP3 connectivity ¹⁹	S	S	S	S	S	S	S	S	S
Single slot CD player with MP3 compatibility	S	S	S	S	S	S	S	S	–
6-disc in-dash CD player with MP3 compatibility	–	–	–	–	–	–	–	–	S

S = Standard. O = Options that can be ordered before a vehicle is manufactured. A = Accessory that can be added at any time. NCO = No cost option. – = Feature not available.

11. Departure angle is measured at tailpipe for Cab Chassis and at rear bumper for Pick-Up. 12. Set of five. 13. Set of four. 14. Front only. 15. Bedliner and 12 volt auxiliary power socket sold separately. 16. Leather gear knobs on manual transmission XLT/Wildtrak models. Not available with optional automatic transmission. 17. Super Cab models power front windows only. 18. Sports Weave trim is mandatory with safety pack option. 19. iPod or MP3 player not included. iPod is a trademark of Apple Inc. Please refer to www.ford.com.au for iPod compatibility.

Specifications and options 4x4

	Single XL C/C		Super XL C/C	Super XL P/U	Super XLT P/U	Crew XL C/C	Crew XL P/U	Crew XLT P/U	Crew Wildtrak P/U
Mechanical									
3.0L TDCi 5-speed manual transmission	S	S	–	S	S	S	–	S	–
3.0L TDCi 5-speed automatic transmission	–	–	O ²⁰	–	–	–	O	–	O
Vehicle masses (kg)									
	Manual Bench seat	Manual Bucket seat	Automatic Bucket seat						
Gross Vehicle Mass ²¹	3037	2957	2967	3032	3032	3042	3009	3019	3009
Kerb mass (maximum)	1654	1656	1666	1747	1866	1957	1967	1786	1796
Payload (maximum) ²²	1383	1301	1301	1285	1166	1075	1075	1223	1223
Front axle load (maximum)	1430	1430	1430	1430	1430	1430	1430	1430	1430
Rear axle load (maximum)	1850	1850	1850	1850	1850	1850	1850	1850	1850
Gross Combination Mass ²³	5500	5500	4875	5500	5500	5500	4875	5500	4875
Exterior dimensions (mm)²⁴									
Overall length	4848	4848	5173	5173	5179	4848	5173	5179	5179
Overall width ²⁵	1788	1788	1788	1788	1788	1788	1788	1788	1788
Overall height	1743	1743	1743	1750	1755	1755	1762	1762	1762
Wheelbase	3000	3000	3000	3000	3000	3000	3000	3000	3000
Front track	1445	1445	1445	1475	1445	1445	1445	1475	1485
Rear track	1440	1440	1440	1470	1440	1440	1440	1470	1480
Front overhang	888	888	888	888	888	888	888	888	888
Rear overhang	–	–	1285	1291	–	1285	1291	1291	1291
Ground clearance	207	207	207	214	207	207	207	214	214
Wading depth	750	750	750	750	750	750	750	750	750
Approach angle (degrees)	34	34	34	34	34	34	34	34	34
Departure angle (degrees) ²⁶	33	33	26	15	33	26	15	15	15
Ramp breakover angle (degrees)	28	28	28	28	28	28	28	28	28
Interior dimensions (mm)									
Front headroom	1012	1012	1012	1012	1012	1012	1012	1012	1012
Rear headroom	–	937	937	937	963	963	963	963	963
Front legroom (maximum)	1049	1068	1068	1068	1068	1068	1068	1068	1068
Rear legroom (minimum)	–	789	789	789	831	831	831	831	831
Front shoulder room	1405	1405	1405	1405	1405	1405	1405	1405	1405
Rear shoulder room	–	1405	1405	1405	1409	1409	1409	1409	1409
Pick-up box dimensions (mm)									
Load length - at floor	2280	1753	1753	1753	1530	1530	1530	1530	1530
Load width - at floor	1456	1456	1456	1456	1456	1456	1456	1456	1456
Load width - at top	1459	1459	1459	1459	1459	1459	1459	1459	1459
Load width - between wheelhouses	1090	1090	1090	1090	1090	1090	1090	1090	1090
Load height - at floor	465	465	465	465	465	465	465	465	465
Width of rear opening	1328	1328	1328	1328	1328	1328	1328	1328	1328
Ride and handling									
Fully independent double wishbone front suspension	S	S	S	S	S	S	S	S	S
Dual rate semi-elliptic leaf spring rear suspension	S	S	S	S	S	S	S	S	S
Front ventilated disc brakes	S	S	S	S	S	S	S	S	S
Power steering (RPM sensitive)	S	S	S	S	S	S	S	S	S
Turning circle - kerb-to-kerb (m)	12.6	12.6	12.6	12.6	12.6	12.6	12.6	12.6	13.0
15" x 6.5" styled steel wheel with 235/75R15 tyres ²⁸	S	S	S	–	S	S	–	–	–
16" x 7.0" alloy wheel with 245/70R16 tyres ²⁸	–	–	–	S	–	–	S	–	–
18" x 7.5" alloy wheel with 255/60R18 tyres ²⁷	–	–	–	–	–	–	–	–	S
Limited Slip Differential (LSD)	S	S	S	S	S	S	S	S	S
4X4 Shift on the fly	S	S	S	S	S	S	S	S	S
Electronic remote front wheel hub lock	S	S	S	S	S	S	S	S	S
2W-4WH-4WL selector switch ²⁹	O	–	–	O	O	O	O	O	O

HR = High Rider. C/C = Cab Chassis. P/U = Pick-up.

²⁰. Air conditioning is mandatory with optional bucket seats and/or optional automatic transmission (where available). ²¹. Gross Vehicle Mass (GVM) is defined as the sum of the kerb mass and the payload. ²². Payload is defined as the maximum combined value of occupants/cargo/added options/added structures/towball download (when towing). ²³. Includes braked trailer. ²⁴. Cab Chassis dimensions with optional factory fitted tray (where available). ²⁵. Excludes exterior side mirrors. ²⁶. Departure angle is measured at tailpipe for Cab Chassis and at rear bumper for Pick-Up.

	Single XL C/C	Super XL C/C	Super XL P/U	Super XLT P/U	Crew XL C/C	Crew XL P/U	Crew XLT P/U	Crew Wildtrak P/U
Exterior								
Body colour rear step bumper	-	-	S	-	-	S	-	-
Stainless steel rear step bumper	-	-	-	S	-	-	S	S
Painted wheel arch flares with integrated mud flaps	-	-	-	S	-	-	S	S
Black moulded wheel arch flares with integrated mud flaps	S ³⁰	S ³⁰	S	-	S ³⁰	S	-	-
4-door Dual Rear Access System	-	S	S	S	-	-	-	-
Front fog lamps	-	-	-	S	-	-	S	S
Power exterior mirrors	S	S	S	S	S	S	S	S
Chrome exterior mirrors, door and tailgate handles	-	-	-	S	-	-	S	S
Exterior mirrors with integrated LED turn indicator and puddle lamps	-	-	-	-	-	-	-	S
Aluminium side steps	-	-	-	S	-	-	S	S
Roof rails	-	-	-	-	-	-	-	S
Chrome sports bar with high mounted stop lamp	-	-	A	S	-	A	S	-
Aerodynamic sports bar	-	-	-	-	-	-	-	S
Roller shutter	-	-	-	-	-	-	-	NCO ³¹
Bedliner with 12 volt power socket	-	-	A ³²	S	-	A ³²	S	S
External rope rail	-	-	S	-	-	S	-	-
Inner rope hooks	-	-	-	S	-	-	S	S
Aluminium tray	O	O	-	-	-	-	-	-
Safety and security								
Driver and front passenger airbags	S	S	S	S	S	S	S	S
4-wheel Anti-lock Braking System (ABS) with Electronic Brakeforce Distribution (EBD)	O	-	-	S	-	-	S	S
Safety pack featuring 4-wheel ABS with EBD, front side head/thorax airbags and sports weave trim	-	O	O	-	O ³³	O	-	-
Front side head/thorax airbags	-	-	-	S	-	-	S	S
Anti-theft alarm system	-	-	-	S	-	-	S	S
Engine immobiliser & central locking	S	S	S	S	S	S	S	S
Remote fuel lid opener	-	-	S	S	-	S	S	S
Remote keyless entry with 2 key fobs	S	S	S	S	S	S	S	S
Interior								
Multi-meter	-	-	-	-	-	-	-	S
Cruise control	A	A	A	S	A	A	S	S
Tilt adjustable steering column	S	S	S	S	S	S	S	S
Air-conditioning	NCO ²⁰ /A	S	S	S	S	S	S	S
Leather steering wheel and gear knobs ³⁴	-	-	-	S	-	-	S	S
Power windows ³⁵	S	S ³⁵	S ³⁵	S ³⁵	S	S	S	S
Inner chrome door handles	-	-	-	S	-	-	S	S
Fan boosted ventilation/heater/demister	S	S	S	S	S	S	S	S
Heated rear window	-	S	S	S	S	S	S	S
Interior storage								
Passenger side sliding lunch tray	S	S	S	S	S	S	S	S
Double lid centre console with arm rest	-	S	S	S	S	S	S	S
Under floor storage in rear compartment	-	S	S	S	-	-	-	-
Seating and trims								
Dark Grey Cloth trim	S	S	S	-	S	S	-	-
Sports Weave trim	-	O ³⁶	O ³⁶	S	O ³⁶	O ³⁶	S	-
Alcantara leather trim (with Wildtrak logo)	-	-	-	-	-	-	-	S
Front bench seat	S	-	-	-	-	-	-	-
Front bucket seats	O ²⁰	S	S	S	S	S	S	S
Rear jump seats	-	S	S	S	-	-	-	-
Rear bench seat with head rests	-	-	-	-	S	S	S	S
Vinyl floor covering	S	-	-	-	-	-	-	-
Cloth floor covering	-	S	S	S	S	S	S	S
Audio & communication								
iPod/MP3 connectivity ³⁷	S	S	S	S	S	S	S	S
Single slot CD player with MP3 compatibility	S	S	S	-	S	S	-	-
6-disc in-dash CD player with MP3 compatibility	-	-	-	S	-	-	S	S

S = Standard. O = Options that can be ordered before a vehicle is manufactured. A = Accessory that can be added at any time. NCO = No cost option. - = Feature not available.

27. Set of five. 28. Set of four. 29. With optional automatic transmission. 30. Front only. 31. Payload is reduced by 44kg when roller shutter is fitted. 32. Bedliner and 12 volt auxiliary power socket sold separately. 33. Safety pack is mandatory with optional automatic transmission (where available). 34. Leather gear knobs on manual transmission XLT/Wildtrak models. Not available with optional automatic transmission. 35. Super Cab models power front windows only. 36. Sports Weave trim is mandatory with safety pack option. 37. iPod or MP3 player not included. iPod is a trademark of Apple Inc. Please refer to www.ford.com.au for iPod compatibility.

Making your ownership experience even more rewarding.

A great car is just the beginning.

We support you with a wide range of services that aim to make you one of the most satisfied vehicle owners in Australia. Speak to your Ford Dealer today about how we can help you make the most out of your vehicle ownership experience.

3 year/100,000km new car warranty.*

For three years or 100,000km, whichever comes first, your Ford is covered against any defects in factory materials or workmanship. This also applies to Genuine Ford Accessories you may have had fitted before you took delivery.

5 year warranty against perforation corrosion.*

It's reassuring to know that the original body of your gleaming new Ford is guaranteed against perforation corrosion for the first five years of its life. If perforation corrosion occurs, we'll fix it for free.

myFord Warranties & Insurance.

When you first turn the key of your brand new Ranger you want to do so without a care in the world. Our range of myFord products gives you that extra peace of mind. For more information about myFord Warranties, Insurance and Roadside Assistance visit your participating Ford Dealer for further details on the plans that best suit your needs. Terms, conditions and eligibility criteria apply.

Want to contact us?

For answers to your questions, or help with any concern, contact our Customer Relationship Centre on 13 FORD (13 3673).

Running a fleet?

Our Ford Business Centre is available to assist fleet customers with information on Ford products and services. Call 1300 13 13 30.

Visit us on the web.

If you want more information on Ford or our entire product range, visit us on the Internet at ford.com.au.

Click to Request



Quote



Hot Deals



Test Drive

#Conditions and exclusions apply. See your authorised Ford Dealer for details.

This brochure is designed to provide you with a general introduction to the Ford Products (including available optional equipment) referred to, and should be read in conjunction with the latest specification sheet. Because of changes in conditions and circumstances Ford* reserves the right, subject to all applicable laws, at any time, at its discretion, and without notice, to discontinue or change the features, designs, materials, colours and other specifications and the prices of its products, and to either permanently or temporarily withdraw any such products from the market without incurring any liability to any prospective purchaser or purchasers. The latest specification sheet should be referred to for information on the availability, ordering and use of optional equipment. Always consult an authorised Ford Dealer for the latest information with respect to features, specifications, prices, optional equipment and availability before deciding to place an order. *FORD MOTOR COMPANY OF AUSTRALIA LIMITED. (A.B.N. 30 004 116 223) Registered Office: 1735 Sydney Road, Campbellfield, Victoria 3061, Australia. Printed November, 2010. FRANG0005



ford.com.au

